

HFD200 Head Fixation Device

For VISIUS® Surgical Theatre iCT and iMRI Solutions



Designed to support state-of-the-art intraoperative CT or MRI imaging in pinned procedures **without moving the patient.**

Precise Positioning

The HFD200 headholder incorporates six degrees of freedom for precise positioning in prone, supine, or lateral surgical approaches. The patient remains in the same position during intraoperative scans, eliminating effort and risk associated with moving a patient to acquire new images mid-procedure. Fine adjustment of the desired pin pressure is achieved with the HFD200's smooth ratchet mechanism and calibrated pressure gauge. A lattice-shaped architecture makes the headholder lightweight, yet strong – supporting up to 20 kg (44 lb) while holding the patient's head securely in place.

Optimal Image Quality

The HFD200's precise positioning yields two advantages:

- >> Puts patients exactly where surgeons need them for the procedure. For example, it supports prone procedures where the patient's head is lower than the top of the OR table.
- >> Places the target anatomy into ideal iso-center as the scanner is brought over the patient, helping to optimize image quality.

The use of premium composite materials is another design element that optimizes image quality by eliminating potential scan artifacts. The HFD200 is both radiolucent and MRI-safe, enabling it to be used in VISIUS Surgical Theatres with either iCT or iMRI solutions, as well as with other X-ray based imaging systems.

HFD200 Product Specifications

Imaging Modality Compatibility	CT compatible, X-ray compatible, and MR safe (1.5T and 3T)
Indications for Use	<ul style="list-style-type: none"> • Open and MIS craniotomy procedures • Spinal surgeries where rigid head fixation is necessary • Pinned procedures with or without intraoperative imaging
Linkage System	6 degrees of freedom (5 rotational, 1 lateral translational) with mechanical locks
Table Compatibility	IMRIS tables with two post table adaptor: ORT100, ORT200, ORT300, or T2X
Weight	4 kg (8.8 lb)
Max Load Capacity	<ul style="list-style-type: none"> • Vertical: 20 kg (44 lb) • Clamping: 360N (80 lb)
Skull Clamp Range (without pins)	<ul style="list-style-type: none"> • Minimum: 125 mm (4.9 in) • Maximum: 270 mm (10.6 in)
Patient Profile	Supports patients from 1 year old (50th percentile) up to adult (95th percentile male)
iMRI Coil Compatibility	HC150 Flexible Head Coil 1.5T and HC300 Flexible Head Coil 3T for the VISIUS® Surgical Theatre
Navigation Support	Adaptor clamp enables neuronavigation reference arms to connect to the HFD200
Compatible Skull Pins (X-ray, CT & MR)	Radiolucent Disposable Adult (Integra A/N A2020)
Compatible Skull Pins (MR only)	<ul style="list-style-type: none"> • Titanium Disposable Child (Integra A/N A1119) • Titanium Disposable Adult (Integra A/N A1120) • Titanium Reusable Adult (Integra A/N A1121) • Titanium Reusable Child (Integra A/N A1122)
Dimensions (mm)	<ul style="list-style-type: none"> • Table Adaptor: 397(w) x 145(h) x 155(d) • Linkage System: 140(w) x 100(h) x 350(d) • Skull Clamp: 425-570(w) x 280(h) x 92(d)

HFD200 Components

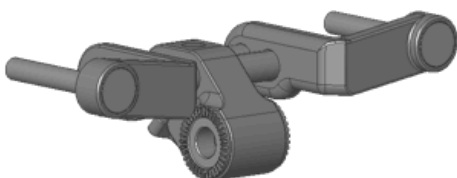
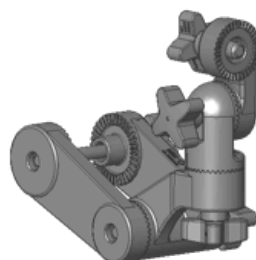
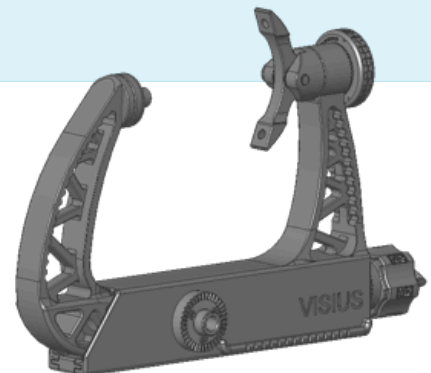


Table Adaptor



Linkage System



Skull Clamp